

M2DW LASER-Scanner

with air- or water-cooling



M2DW 160/40



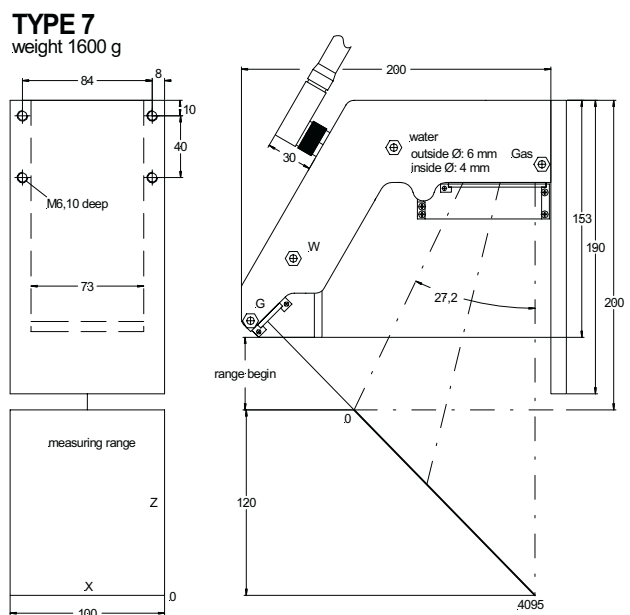
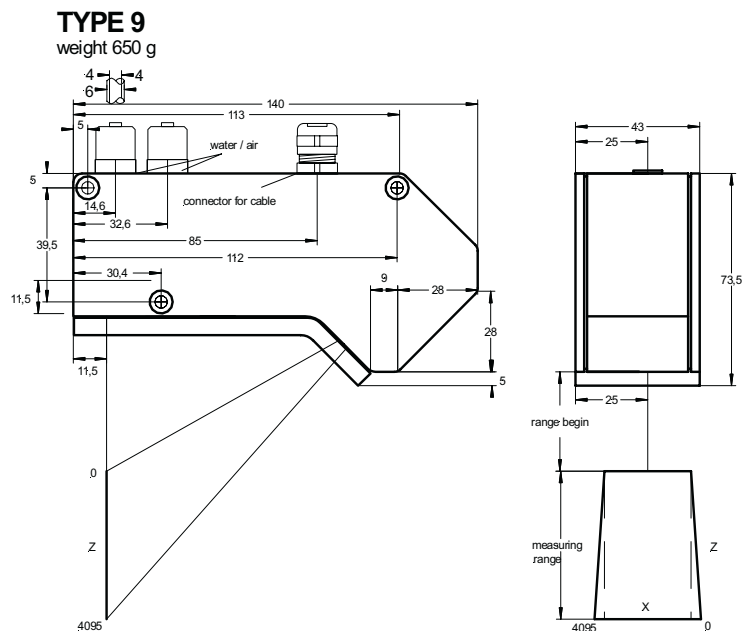
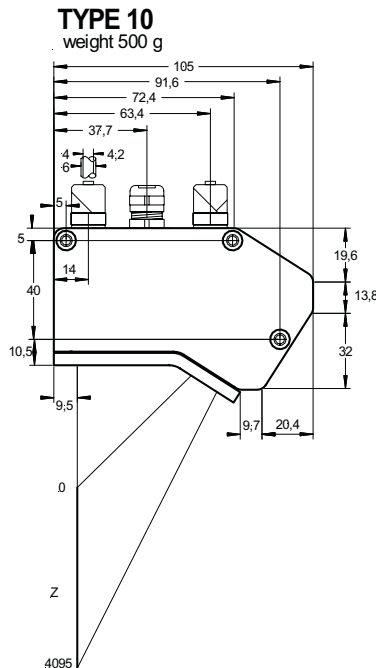
M2DW 75/30



M2DW 120/100

- for temperatures up to 500°C
- Heat shield and integrated cooling

- Measuring
- Controlling
- Monitoring



DB-M2DW_3-05-E

Technical Data M2DW / 50 Hz- and 100 Hz version:

Scanner	M2DW-75/30	M2DW-160/40	M2DW-120/100
Case type	9	10	7
Range Z [mm]	75	160	120
Begin scan range X [mm]	30	40	100
End scan range X [mm]	40	110	100
Range begin [mm]	90	60,0	47
Resolution Z [mm]	0,15	0,25	0,3
Resolution X [mm]	0,05	0,16	0,3
Linearity [% of meas. value]	0,2	0,2	0,2
Laser protection class	2	2	2

Scan rate*	50 Hz	100 Hz
Shutter speed**	1/28.000 s up to 1/125 s	1/47.000 up to 1/225 s
Specials		feeler gage, elapsed hour counter serial number electronically readable

Light source	Connections for air- or water-cooling Laser, wave length 658 nm, red visible
Ambient light	5.000 Lux
Operating time	Laser diode: 50.000 h
max. Vibration	5 g up to 1 kHz
Operating temperature	0° ... +40°C
Storage temperature	-20° ... +70°C
Humidity	< 90% RH
Protection class	IP 64
Power supply	via Electronic module: i-Control, Blue Box or ISA-Card
Measuring surface	white to black, shiny, high mirroring

*) please order

**) adjustable via software

Delivery:

- Sensor head
- Sensor cable 2 m
- Demo-Software
- Manual
- Electronic module alternatively:
 - i-Control
 - Blue Box
 - ISA-Card

Options:

- Special cable length

Accessories:

- Protection window / glass
- Protection window / plastics
- 2 Scanner synchronized