

# Inductive Proximity Switch Mi250-d



- Proximity switch with digital electronic analysis
- Switching distance 15, 20 or 25 mm
- Temperature range -15°C ... 230°C (short-time up to 250°C)

### Mounting of the sensor head:

The proximity switch can be attached to a metallic base with 4 screws at the fastening angle. The metallic base should be in line with the white teflon cover of the initiator.

### Minimum lateral distances:

Sensor to sensor:  
NJ 15: 30 mm; NJ 20: 30 mm; NJ 25: 50 mm

Sensor to metal:  
NJ 15: 15 mm; NJ 20: 30 mm; NJ 25: 50 mm

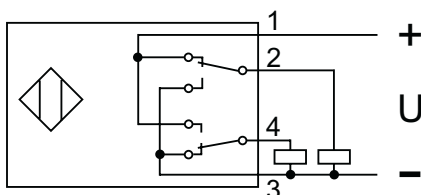
### Minimum distances of opposite sensors:

NJ 15: 45 mm; NJ 20: 90 mm; NJ 25: 120 mm

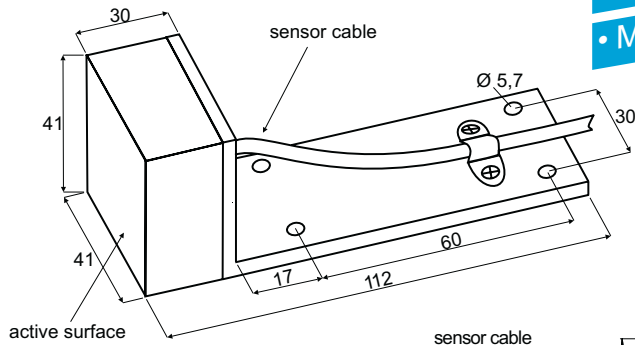
### Sensor cable:

The cable is delivered with external steel mesh protection. Since the inside material is teflon, no sharp bending or permanent pressing may be applied!

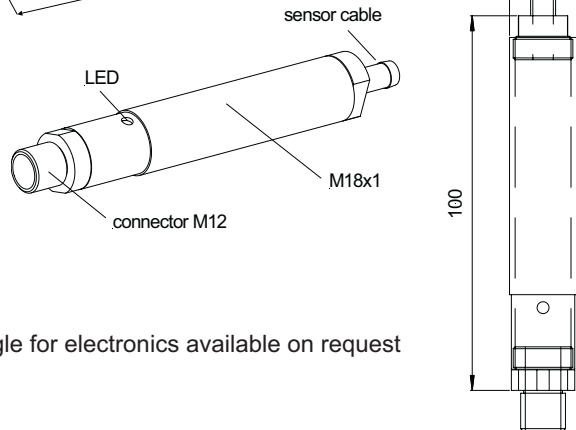
### Connections:



### Sensor head:



### Electronic:



Mounting angle for electronics available on request

- Measuring
- Controlling
- Monitoring

### Technical Data:

Switching distance *	NJ 15 = 15 - 16,5 mm NJ 20 = 20 - 22,5 mm NJ 25 = 24,5 - 26 mm
Work piece (St37)	NJ 15, NJ 20: min. 40x32 mm NJ 25: min. 60x60 mm
Supply voltage	24 V / 15 ... 50mA + I <sub>a</sub> Ripple max. 0,5 V <sub>ss</sub>
Switching frequency	0 ... 60 Hz
Switching outputs	4: 24 V (NO) short-circuit proof 2: 24 V (NC)
Output current	I <sub>a</sub> / 20°C = 100 mA I <sub>a</sub> / 70°C = 50 mA
Pin assignment of connector	1: +24 V 3: 0 V 4: switching output NO 2: switching output NC 5-8: assigned
LED	red, illuminated if initiated
Temperature range	Sensor: -15°C ... 230°C, (short-time up to 250°C) Electronic: 0°C ... 70°C
Protection class	Sensor: IP60, Electronic: IP64
Connector	M12, 8 pole
Cable length	3, 7, 10 or 20 m (20 m only at switching distance up to 20 mm)
Weight	Sensor: 160 g Electronic: 100 g Sensor cable: 70 g/m
Option	Mounting angle for electronic module

\* used sensor surface is 70%

error and technical modification reserved

DB-Mi250-d\_1-02-E