

The most experienced name in...



Test photo courtesy of NCAC at George Washington University

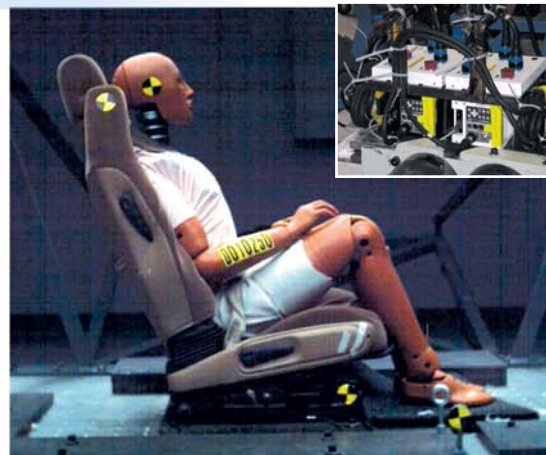
## High-Speed Camera Systems for the Automotive Testing Market

### Product Features

- Hi-G
- Multi-Camera Heads
- High Resolution
- Micro Camera Heads
- Ultra-High Frame Rates
- Ultra-High Light Sensitivity

### Applications We Service

- Vehicle Impact Testing
- Airbag Deployment Testing
- Safety Restraints Testing
- Automotive Component Testing
- Automotive Research and Design



NAC Image Technology is a proud supplier of high-speed camera systems to the world's largest automotive manufacturers and Tier 1 automotive suppliers. We've installed and implemented multi-camera systems in some of the most demanding locations throughout North America, Latin America, Europe, Japan and Asia. When it comes to reliable, high-quality, high-speed camera systems, make the safe choice with NAC and you'll *see the visible difference*.

Providing quality and reliability since 1958

Visit us on the web at [www.nacinc.com](http://www.nacinc.com)

**nac**  
Image Technology

*The visible difference.*

# The NAC Family of Products for the Automotive Industry

NAC Image Technology offers a wide range of camera models to meet the most demanding and unique needs in an automotive testing environment. ALL NAC products...

- Can be operated as standalone systems (no PC required!)
- Offer real-time NTSC, S-Video and VGA output
- Can be operated as part of a multi-camera environment
- Provide lightning fast and extremely reliable Gigabit image transfer rate and communication
- Can download 1 GB of data in less than 40 seconds
- Can be archived and distributed on CD's and DVD's



## Memrecam GX-1

The first member of the new GX family, the Memrecam GX-1 is a rugged, ultra light sensitive camcorder built specifically for the Automotive Crash and Component Testing Market. This Hi-G, high resolution (1280 X 1024 with selectable frame size) camera features live NTSC/PAL video output and provides a bit density of 8bit / 10bit /12bit as a standard feature. The GX-1 can be synchronized to IRIG-B, an external source or an internal clock.



## Memrecam fx-K4

The Memrecam fx-K4 is the only high-speed camera on the market today that combines ultra high light sensitivity, ultra high framing rates and mega pixel resolution! The K4 resolves 1280 X 1024 pixels at 1,000 fps with unparalleled light sensitivity of ISO2400 (color) and ISO10,000 (monochrome). The fully self contained, digital Memrecam fx K4 records brilliant color or crisp monochrome images at frame rates of up to 168,000 fps. Available with up to 16 Gigabytes of internal RAM, the Memrecam fx K4 is the only system in the world which allows the user to record mega pixel images for more than 10 seconds at 1,000 fps. \*Optional Gigabit Ethernet Interface



## Memrecam fx-RX5

The Memrecam fx-RX5 is a flexible, lightweight, high-speed, Hi-G mega pixel camera system used for onboard vehicle impact testing. The RX5 records images at 1,000 fps at 1280 X 1024 pixel resolution (with optional speed up to 10,000 fps). Alternatively, the RX5 uses the Memrecam Micro camera head (21mm X 21mm X 99mm, 0.3kg) recording at up to 500 fps in extremely confined spaces. The RX5 Multi-Camera Head configuration is an adaptation of the RX5 providing the user with an alternative system that helps reduce the overall weight of instrumentation systems in an onboard impact test environment.



## HotShot 512 sc

The HotShot 512 sc is NAC's most versatile digital system offering a perfect synthesis of light sensitivity, fast capture rates, and longest digital record times to system RAM. The 512 sc features a 2/3" 512 X 512 Generation 3 CMOS sensor array that allows images to be captured at full resolution at an unbelievable 5,000 fps. The 16-micron pixel size of sensor gives it outstanding light sensitivity (1650 ASA), which until now, could only be achieved by multi sensor cameras. The 512 sc is available with up to 16 Gigabytes of internal memory that provides over 1 minute of record time at 1,000 fps and over 4 minutes at 250 fps.



## Memrecam fx-K3R

The Memrecam fx-K3R is a fully self-contained, low-cost, flexible, lightweight, high-speed mega pixel camera system used for both onboard and offboard automotive testing applications. The K3R utilizes a state-of-the-art CMOS sensor recording images at 1,000 fps at 1280 X 1024 pixel resolution (with optional speeds up to 10,000 fps).

NAC Image Technology  
15 McCoy Place  
Simi Valley, CA 93065  
Tel: 805-584-8862  
Fax: 805-584-3642  
Email: sales@nacinc.com

Visit us on the web at [www.nacinc.com](http://www.nacinc.com)



*The visible difference.*