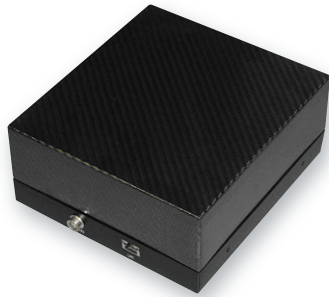


DALSA XR-4 (Preliminary)

X-ray camera



XR-4

Key Features

- ▶ High Spatial Resolution
- ▶ High DQE
- ▶ High sensitivity and low noise
- ▶ Large field of view
- ▶ High frame rate
- ▶ GigE output interface
- ▶ Automatic Exposure Control
- ▶ Flexible binning
- ▶ Real time imaging resulting in increased patient comfort and patient throughput

Typical Applications

- ▶ Diagnostic spot mammography
- ▶ Needle localization
- ▶ Stereotactically-guided needle breast biopsy
- ▶ Specimen radiography
- ▶ Computed Tomography
- ▶ Industrial X-ray

Overview

A larger, faster, more sensitive X-ray camera.

The DALSA XR-4 is an innovative 16 megapixel CCD digital X-ray camera for high resolution radiography applications such as diagnostic spot mammography, stereotactically-guided needle breast biopsy and CT. The camera has a large field of view (150 x 150 mm) and can operate up to 10 frames per second (4 x 4 binning mode).

The high spatial resolution, low noise, and high sensitivity of the XR-4 provides better images than other competing technologies. The XR-4 is a reliable camera with consistent performance over time. Its robustness and durability maximizes return on investment.

Specifications

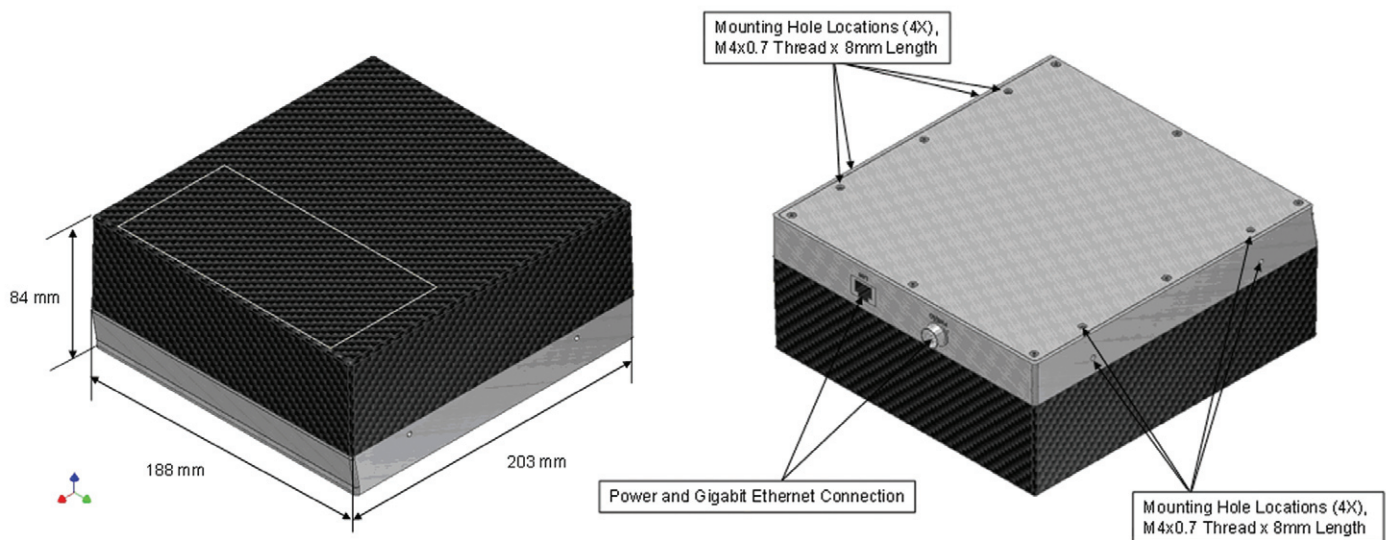
Resolution	4168 x 4168 (2084 x 4168 and 1084 x 2084)
Data Rate	5 MHz
Max. Frame Rate	1 fps at no binning, 4 fps 2x2 binning, 10 fps 4 x4 binning
Effective Pixel Size	36 μ m
Output Data Format	14 bits GigE
Dynamic Range	72 dB
Binning	1x1, 2x2, 4x4
Size	84 mm x 188 mm x 203 mm
Weight	<5 kg
Operating Temp	0 °C to 40 °C
Regulatory Compliance	IEC601-1, Class 1, Type B

With its GigE output interface, and no need for a frame grabber, the XR-4 is easy to integrate in your system. The automatic exposure control feature minimizes exposure to X-rays.

DATA SHEET

DALSA XR-4 (Preliminary) X-ray camera

The XR-4 comes in three different flavours; a 7.5 x 7.5 cm, 7.5 x 15 cm and a 15 x 15 cm field of view.



XR-4 Overview, Dual Configuration

Location of mounting holes and LAN, power connectors