

MTF for various object heights

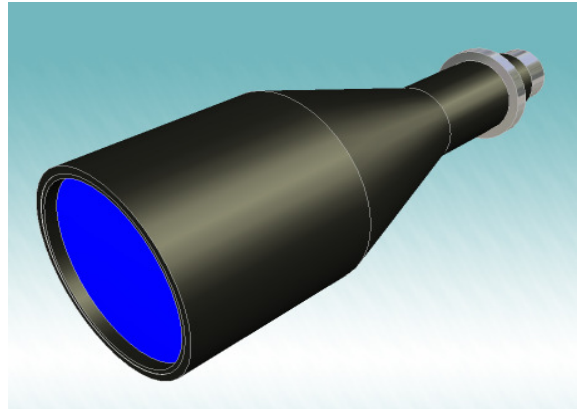
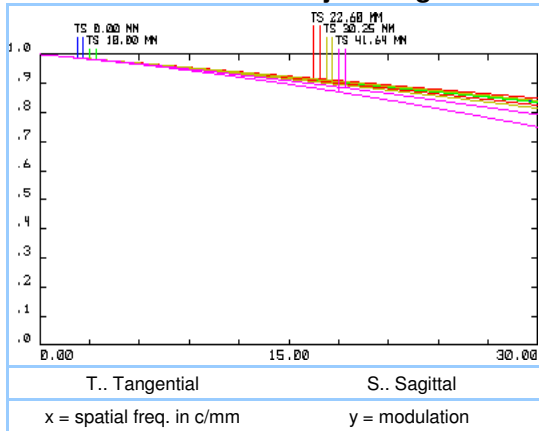
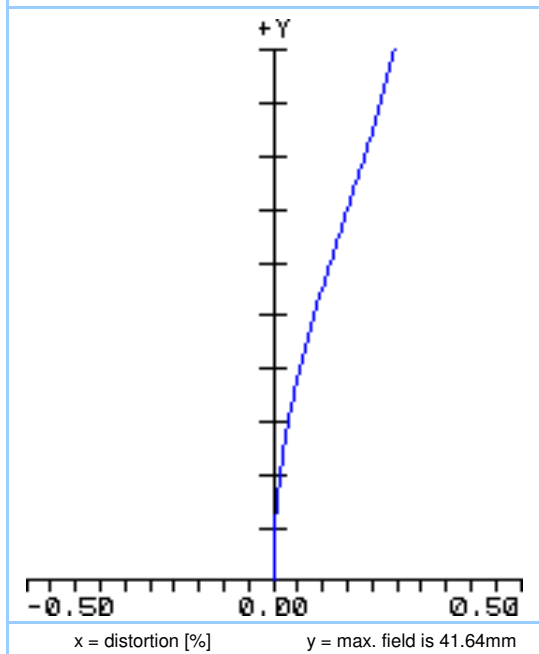


Figure 1: telecentric lens

Distortion for 586nm



Specifications

ARTICLE #	S5LPJ1541
magnification (+/-5%)	0.132
working distance [mm] (+/-2%)	284
length [mm]	408.9
max. object size [mm] at a chip size of [mm] distorsion [%]	36.3 x 27.2 4.8 x 3.6 (1/3") 0.1
max. object size [mm] at a chip size of [mm] distorsion [%]	48.4 x 36.3 6.4 x 4.8 (1/2") 0.19
max. object size [mm] at a chip size of [mm] distorsion [%]	66.6 x 50.0 8.8 x 6.6 (2/3") 0.21
NA	0.01
weight [kg]	4.5

Object

Sensor

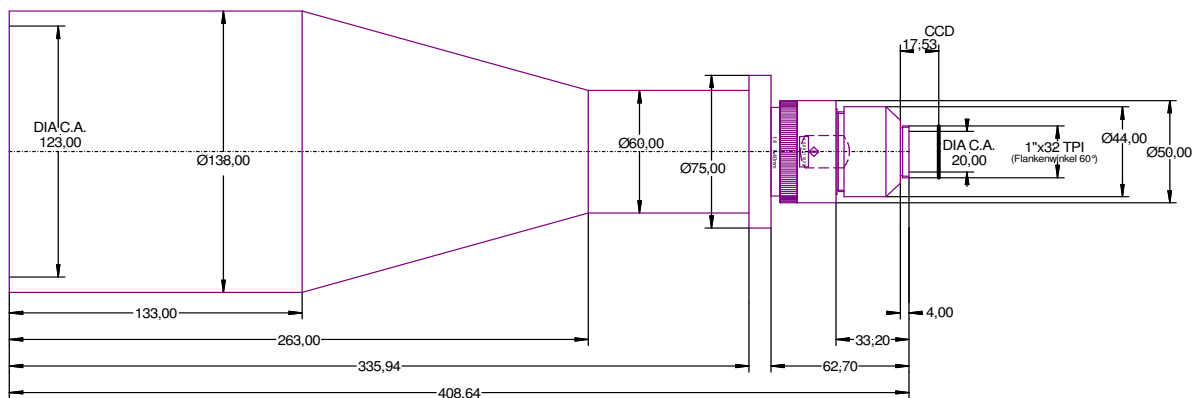


Figure 2: outline drawing

other adapter on special request