

MTF for various object heights

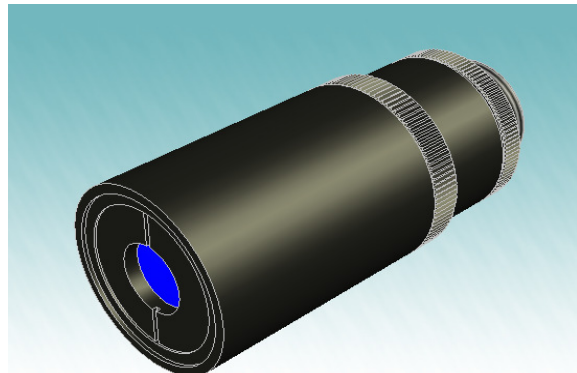
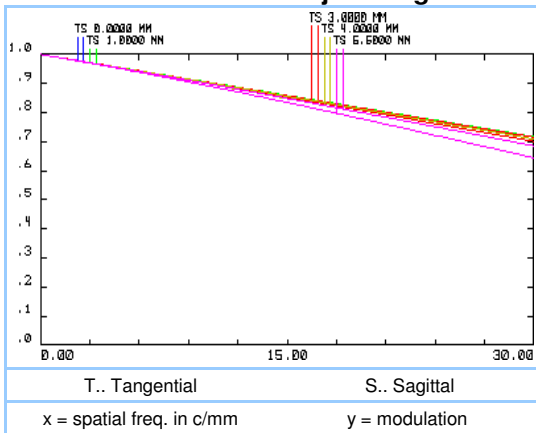
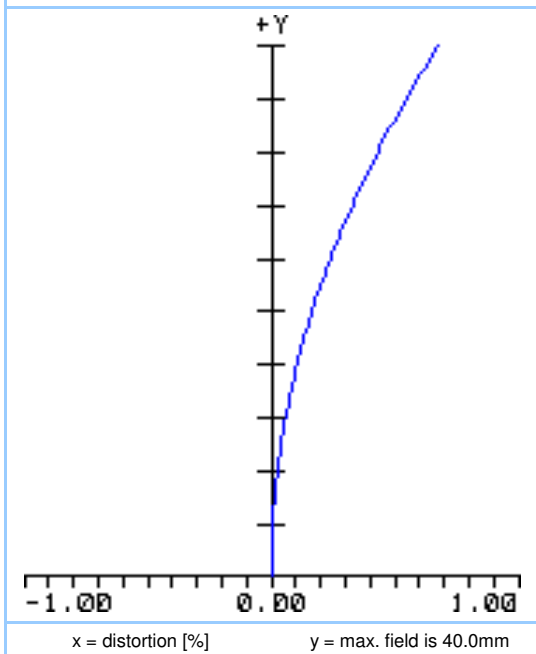


Figure 1: telecentric lens

Distortion for 586nm

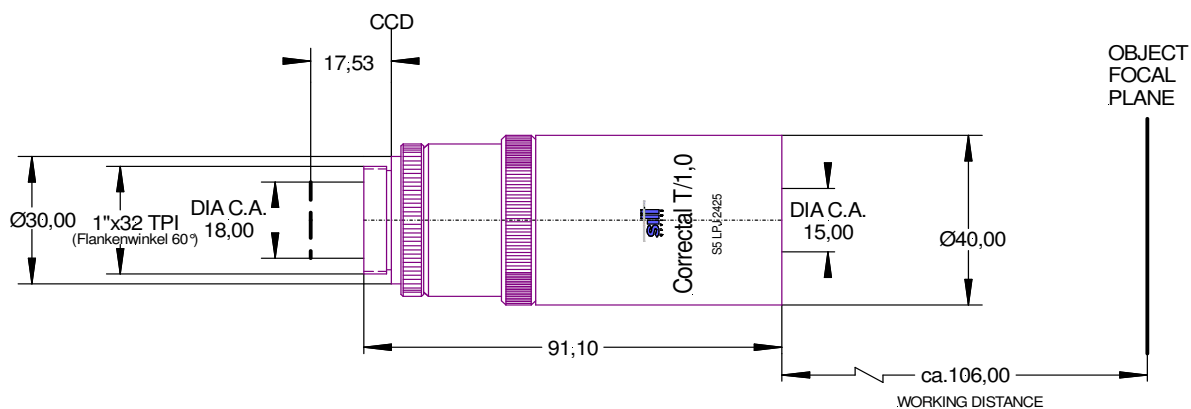


Specifications

ARTICLE #	S5LPJ2425
magnification (+/-5%)	1.0
working distance [mm] (+/-2%)	106
length [mm]	91
max. object size [mm] at a chip size of [mm] distorsion [%]	4.8 x 3.6 4.8 x 3.6 (1/3") 0.2
max. object size [mm] at a chip size of [mm] distorsion [%]	6.4 x 4.8 6.4 x 4.8 (1/2") 0.4
max. object size [mm] at a chip size of [mm] distorsion [%]	8.8 x 6.6 8.8 x 6.6 (2/3") 0.9
NA	0.06
weight [kg]	0.25

Sensor

Object



other adapter on special request

Figure 2: outline drawing