

MTF for various object heights

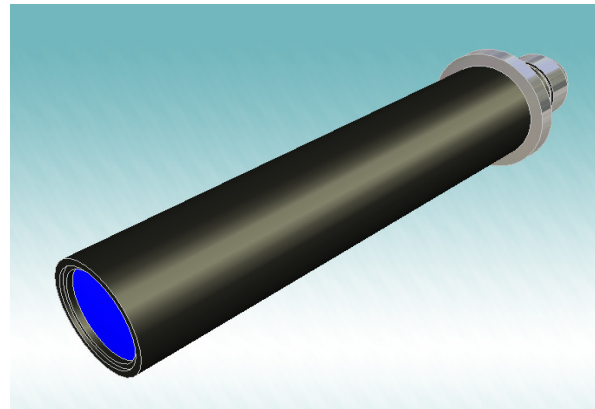
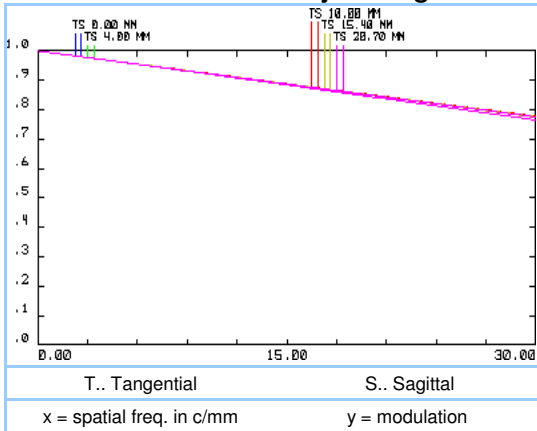
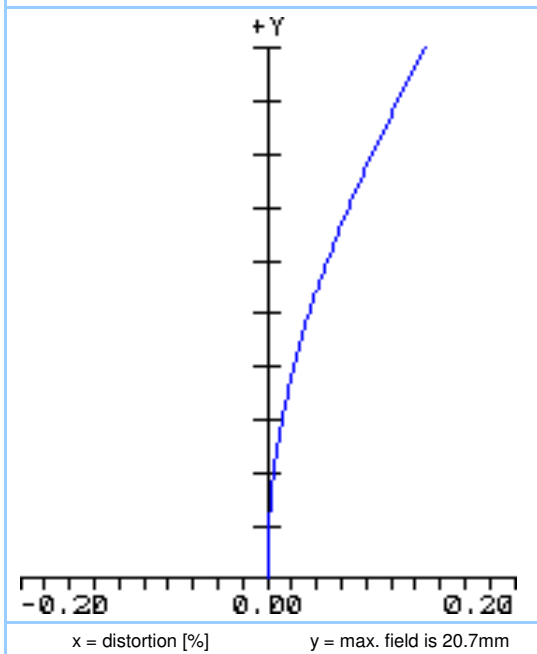


Figure 1: telecentric lens

Distortion for 586nm



Specifications

ARTICLE #	S5LPJ5160
magnification (+/-5%)	0.19
working distance [mm] (+/-2%)	297
length [mm]	334.2
max. object size [mm] at a chip size of [mm]	25.0 x 18.0
distorsion [%]	4.8 x 3.6 (1/3") 0.1
max. object size [mm] at a chip size of [mm]	33.0 x 25.0
distorsion [%]	6.4 x 4.8 (1/2") 0.15
max. object size [mm] at a chip size of [mm]	---
distorsion [%]	8.8 x 6.6 (2/3") ---
NA	0.01
weight [kg]	0.95

Object

Sensor

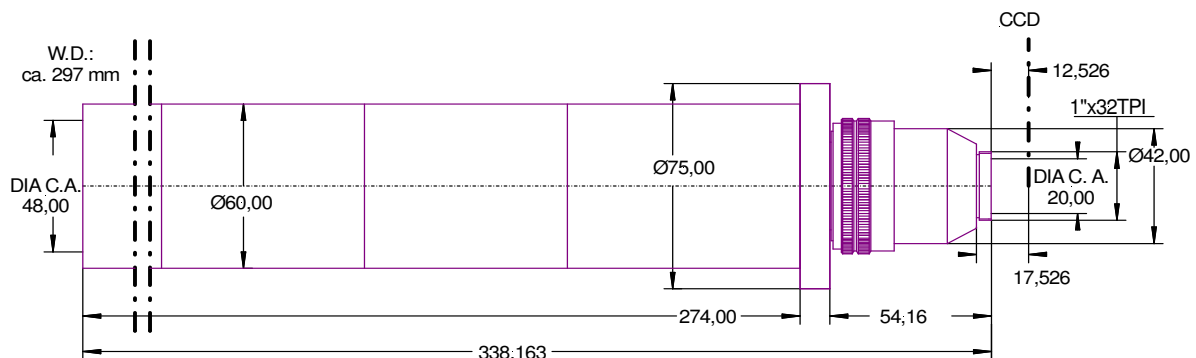


Figure 2: outline drawing

other adapter on special request