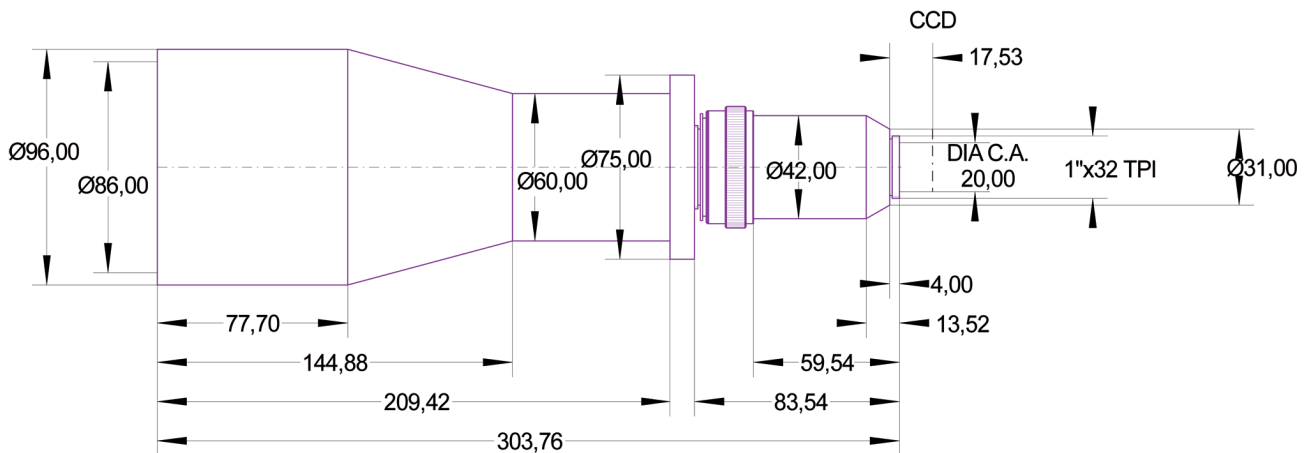
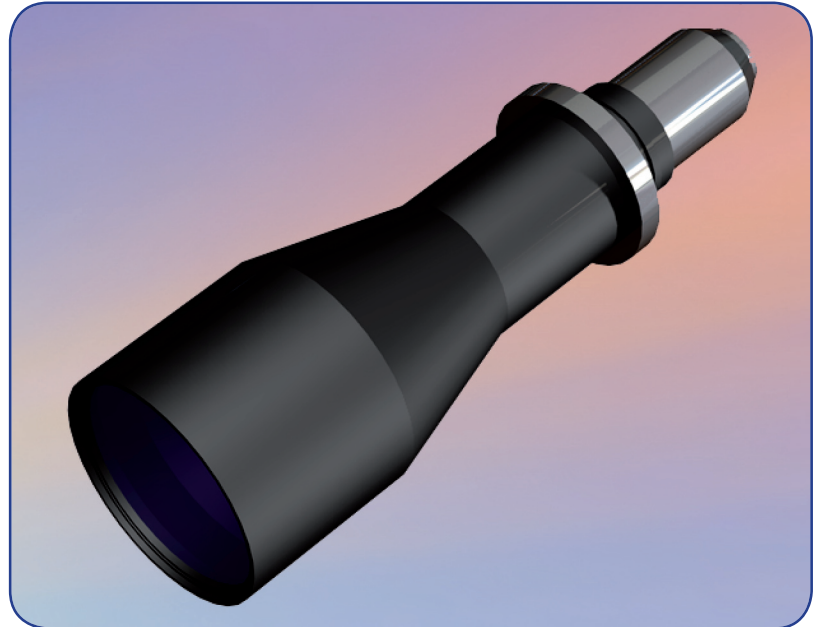


DATA SHEET

S5LPJ6075

Correctal® T85/0.36
telecentric lens
with c-mount



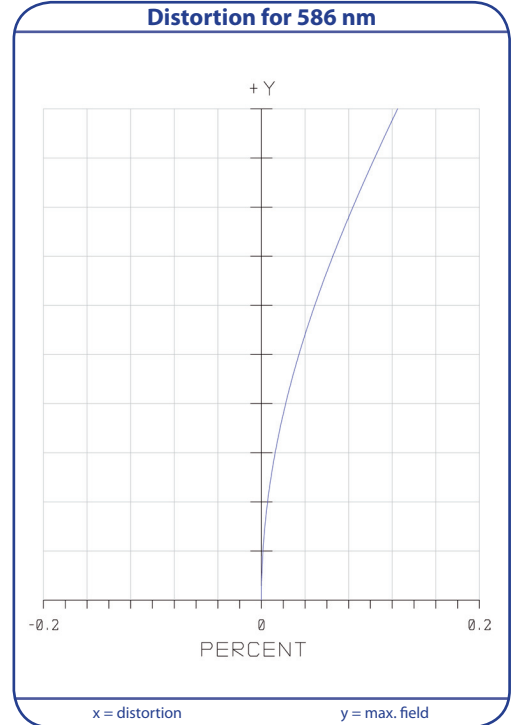
outline drawing

other adapter on special request

S5LPJ6075

Correctal® T85/0.36 telecentric lens with c-mount

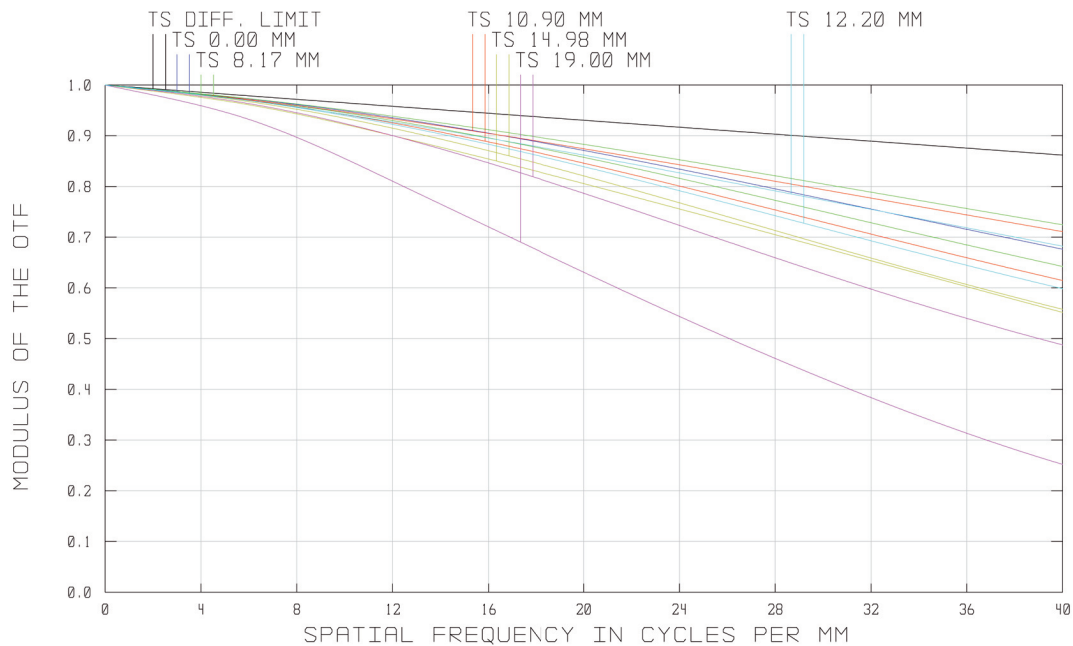
Specifications	
part number	S5LPJ6075
magnification (+/-5%)	0.367
working distance [mm] (+/-2%)	180.0
max. object size [mm] at a chip size of [mm] distorsion [%]	17.4 x 13.0 6.4 x 4.8 (1/2") 0.05
max. object size [mm] at a chip size of [mm] distorsion [%]	19.6 x 14.4 7.2 x 5.3 (1/1.8) 0.06
max. object size [mm] at a chip size of [mm] distorsion [%]	23.9 x 17.9 8.8 x 6.6 (2/3") 0.1
max. object size [mm] at a chip size of [mm] distorsion [%]	29.7 x 23.9 10.9 x 8.8 (1") 0.15
numerical aperture	0.04
max. outside-Ø [mm]	96.0
length [mm]	299.8
weight [kg]	1.6



T.. Tangential

MTF for various object heights

S.. Sagittal



also available with coaxial illumination (S5LPL6075) and with coaxial LED illumination (S5LPL6075/LED)