

#### MTF for various object heights

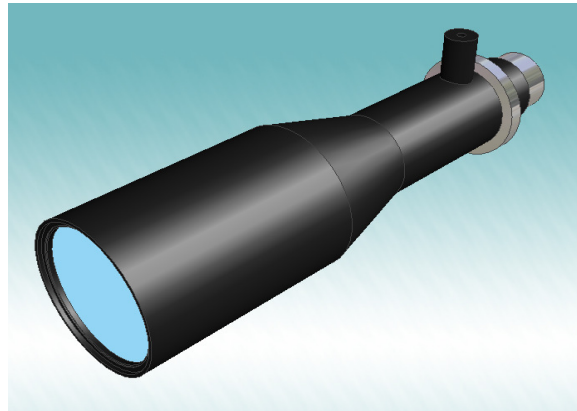
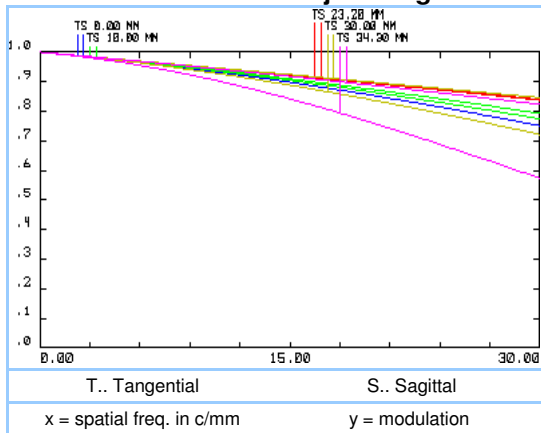
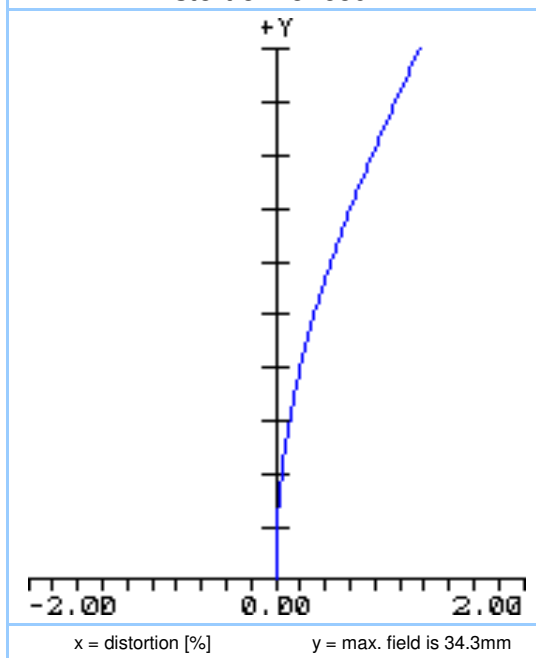


Figure 1: telecentric lens

#### Distortion for 586nm



#### Specifications

ARTICLE #	S5LPL0125
magnification (+/-5%)	0.13
working distance [mm] (+/-2%)	300
length [mm]	380
max. object size [mm] at a chip size of [mm]	36.9 x 27.6
distorsion [%]	4.8 x 3.6 (1/3") 1.1
max. object size [mm] at a chip size of [mm]	48.8 x 36.9
distorsion [%]	6.4 x 4.8 (1/2") 1.3
max. object size [mm] at a chip size of [mm]	67.6 x 50.7
distorsion [%]	8.8 x 6.6 (2/3") 1.7
NA	0.01
weight [kg]	1.8

Object

Sensor

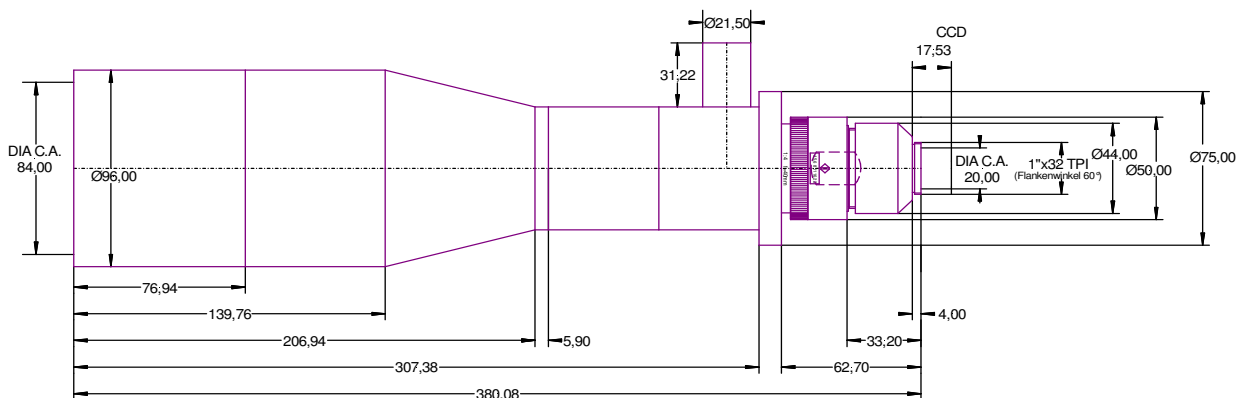


Figure 2: outline drawing

other adapter on special request