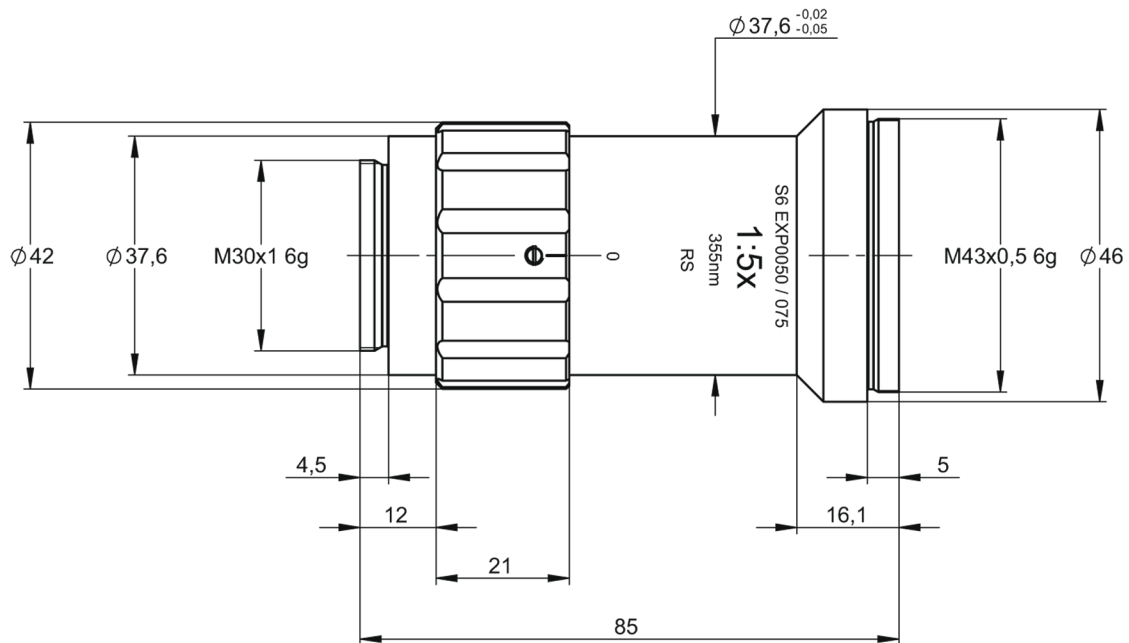


DATA SHEET S6EXP0050/075

beam expander
magnification 5.0
wavelength 355 nm

◆ for standard laser



outline drawing

S6EXP0050/075 beamexpander

Specifications

design wavelength [nm]	355
magnification factor	5.0
divergence adjustable	✓
optical principle	Galilei (no internal focus)
total length [mm]	85.0
mounting thread	M30x1
pointing stability [mrad]	<1
clear input aperture [mm]	6.0
clear output aperture [mm]	30.0
wavefront error ¹⁾	1/e ² diameter ²⁾ of 4.4 for $\lambda/10$
total number of lenses	3
total transmission [%]	98.0
lens material	fused silica
damage threshold ²⁾	1.0 J/cm ² (1ns pulse at 50Hz)
weight [kg]	0.2
accessory	S6MEC0107 - adapter M30x1 to C-mount

Notes

- 1) wavefront error peak to valley on axis proved by design
- 2) beam diameter vignettted at 1/e²
- 3) max. lengthening of 3mm possible